




Ningbo TengLi Testing Co., Ltd

2nd floor, Block B, Ningbo Testing and Certification Base, No. 66
Qingyi Road, Ningbo National Hi-Tech Zone, Ningbo, Zhejiang
Tel: 86574-8783 6802
Fax: 86574-8783 5902

LM-79-19 Test Report

For

LEDVANCE LLC

(Brand Name:  LEDVANCE)

200 Ballardvale Street, Wilmington, MA 01887, U.S.A

Model name(s):

LNSLOT1A68UNHD8SC196CWH

Report Type: Testing and Report According to IES LM-79-2008

**Type of
Luminaire:** LED Linear Light

Report Date: 2022-07-14

Ningbo TengLi Testing Co., Ltd

Prepared By: 2nd floor, Block B, Ningbo Testing and Certification Base,
No. 66 Qingyi Road, Ningbo National Hi-Tech Zone,
Ningbo, Zhejiang

Test & Report By:

Nick Song

Engineer: Nick Song

Review By:

Garman Mo

Manager: Garman Mo

Note: 1. The results contained in this report pertain only to the tested samples

2. This report does not imply product certification, approval, or endorsement by A2LA, or any agency of the Federal Government.

Report No.: JAE220201-F

Report Format Number STD/QP019-409-A/0-NB

www.ningbotenglittesting.com

1 / 25



1.1 Product Information:		
Model Number	LNSLOT1A68UNHD8SC196CWH	
Remark	<p>The construction of Model LNSLOT1A34UNHD8SC148CWH(3000K) is similar with LNSLOT1A68UNHD8SC196CWH(3000K), except for length and wattage. The IES of LNSLOT1A68UNHD8SC196CWH(3000K) was calculated from the IES of Model LNSLOT1A34UNHD8SC148CWH(3000K). The data of Model LNSLOT1A34UNHD8SC148CWH(3000K) is from Report No.: JAE220201-D.</p>	
Representative (Tested) Model	LNSLOT1A68UNHD8SC196CWH(3000K) LNSLOT1A68UNHD8SC196CWH(3500K) LNSLOT1A68UNHD8SC196CWH(4000K)	
Model Difference	N/A	
SKU (if available)	N/A	
Type of Luminaire (for integral lamps, list base type and lamp type)	LED Linear Light	
LED Manufacturer	Bridgelux, Inc.	
LED Model	BXEN-XXX-11L-37A-00-0-0	
Dimming	Dimmable	
Integral Controls	N/A	
Sample Number	JAE220201-F1	
Date of Receipt	Jul. 11. 2021	
Luminaire Aperture (for downlights)	--	in.
Luminaire Length	--	mm
Luminaires Width	--	mm
Number of Units (modular products)	N/A	s

1.2 Rated Values:	
Rated Voltage / Frequency	120-347Vac, 50/60Hz
Nominal Power	68W
Rated Initial Lamp Lumen	6800lm
Declared CCT	3000K, 3500K, 4000K



1.3 Test Specifications:

Test item	<ol style="list-style-type: none"> 1. Total Luminous Flux 2. Luminous Distribution Intensity 3. Luminous Efficacy 4. Correlated Color Temperature 5. Color Rendering Index 6. Chromaticity Coordinate 7. Electrical Parameters
Reference Standard	<ol style="list-style-type: none"> 1. IES LM-79-2019 Electrical and Photometric Measurements of Solid-State Lighting Products 2. ANSI C78.377-2008 Specifications for the Chromaticity of Solid State Lighting Products 3. CIE 13.3-1995 Method of Measuring and Specifying Colour Rendering Properties of Light Sources 4. CIE 15-2004 Technical Report Colorimetry 5. IESNA LM-16-93 Practical Guide to Colorimetry of Light Source

1.4 Test Methods

1) Photometric and Light Distribution Measurement – Goniophotometer Method:

Photometric parameters were measured using the goniophotometer and software. The ambient temperature shall be maintained at $25^{\circ}\text{C} \pm 1^{\circ}\text{C}$, measured at a point not more than 1 m from the sample and at the same height as the sample. The sample was operated at 120 or rated Volts AC, 60Hz. It was stabilized before measurement was made. Luminous flux, luminaire efficacy, zonal lumen were calculated from the software taken at 1° vertical intervals and 22.5° horizontal intervals.

2) Chromaticity Measurement – Sphere-Spectroradiometer Method:

Chromaticity parameters were measured using an integrating sphere, a spectroradiometer and software. The ambient temperature condition inside the sphere was maintained at $25^{\circ}\text{C} \pm 1^{\circ}\text{C}$. The sample measurements were made using a spectroradiometer connected by a fiber optic cable and detector through the detector port of the integrating sphere. The sample was operated at 120 or rated Volts AC, 60Hz. It was stabilized before measurement was made. Chromaticity coordinates, correlated color temperature and color rendering index were calculated from the spectral power distribution taken at 5 nm intervals over the range of 380 to 780 nm.

3) Electrical Measurements:

Electrical parameters were measured using power meters incorporated in goniophotometer or sphere-spectroradiometer system. The ambient temperature surrounding the sample was maintained at $25^{\circ}\text{C} \pm 1^{\circ}\text{C}$. The sample was operated at 120 or rated Volts AC, 60Hz. It was stabilized before measurement was made. Voltage, frequency, current, power, power factor and total harmonic distortion were measured by and read from the power meter.



2.1 Electrical, Photometric and Chromaticity Measurements

Remark: LNSLOT1A34UNHD8SC148CWH(3000K) and
LNSLOT1A68UNHD8SC196CWH(3000K) have the same cross section structure.

Test date	2022-07-13	Test Ambient:	25 ± 1 ° C
Test Orientation	As intended	Stabilization Time (min)	60
Model Number	LNSLOT1A68UNHD8SC196CWH (3000K)	Total Operating Time(min)	75

Electrical Measurement:

Sample No.	Voltage (Vac)	Frequency (Hz)	Current (A)	Power (W)	Power Factor	THD %
JAE220201-F1	120.0	60.01	0.5618	66.54	0.9870	13.60
	347.0	60.01	0.2056	67.69	0.9490	14.30

Photometric Measurement – Goniophotometer Method(Tset Distance: 26.00m):

Parameter	Result	
Test Voltage (V)	120	347
Frequency (Hz)	60	60
Total Luminous (lm)	7207.7**	7201.0**
Luminous Efficacy (lm/W)	108.32	106.38
Beam Angle (°)	102.1	--
Center Beam Candle Power (cd)	2838	--

**The calculation method is on page 23

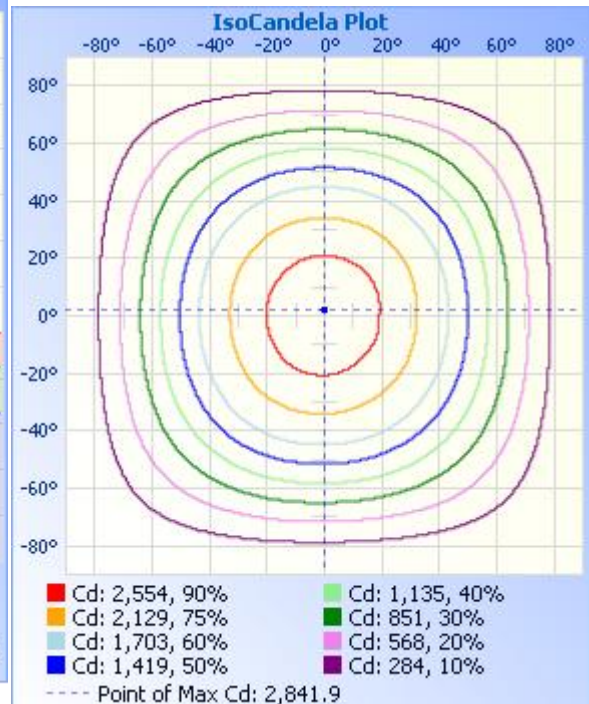
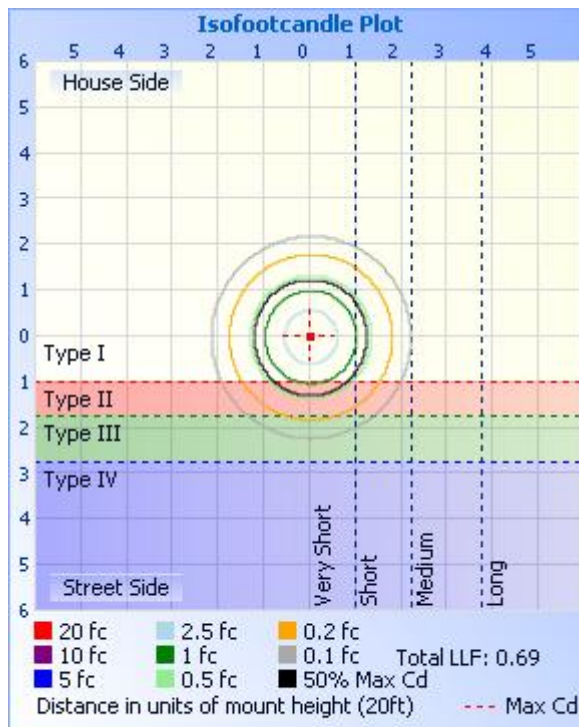
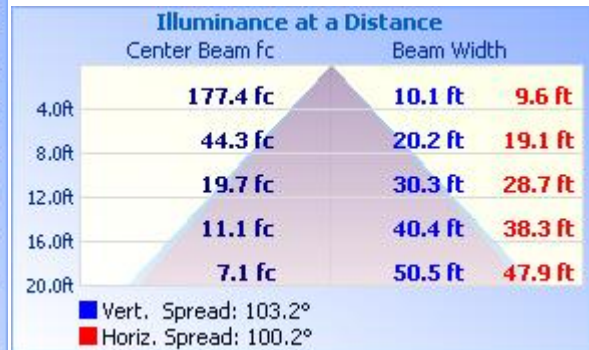
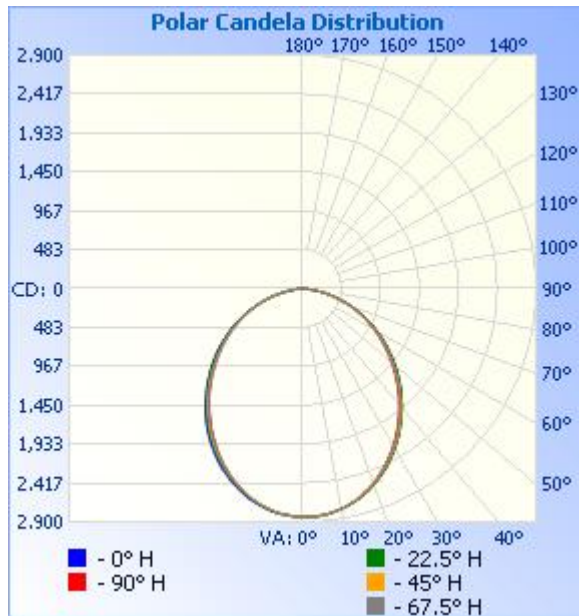


Zonal Lumen Tabulation

Zonal Lumen Summary		
Zone	Lumens	% Luminaire
0-30	2,135.1	29.6%
0-40	3,427.6	47.6%
0-60	5,830.0	80.9%
60-90	1,370.2	19%
70-100	548.1	7.6%
90-120	0.4	0%
0-90	7,200.1	99.9%
90-180	6.7	0.1%
0-180	7,206.8	100%

Lumens Per Zone					
Zone	Lumens	% Total	Zone	Lumens	% Total
0-10	267.5	3.7%	90-100	0.0	0%
10-20	754.9	10.5%	100-110	0.1	0%
20-30	1,112.7	15.4%	110-120	0.2	0%
30-40	1,292.5	17.9%	120-130	0.6	0%
40-50	1,285.7	17.8%	130-140	1.3	0%
50-60	1,116.6	15.5%	140-150	1.4	0%
60-70	822.1	11.4%	150-160	1.4	0%
70-80	446.9	6.2%	160-170	1.1	0%
80-90	101.2	1.4%	170-180	0.5	0%

Photometric Data





Candela Table - Type C

	0	22.5	45	67.5	90	112.5	135	157.5	180	202.5	225	247.5	270	292.5	315	337.5	360
0	2838	2838	2838	2838	2838	2838	2838	2838	2838	2838	2838	2838	2838	2838	2838	2838	2838
1	2839	2838	2838	2842	2837	2841	2836	2838	2836	2835	2836	2838	2838	2837	2832	2841	2839
2	2839	2837	2837	2842	2837	2838	2832	2839	2832	2830	2832	2833	2832	2835	2837	2837	2839
3	2837	2834	2839	2839	2836	2832	2830	2832	2828	2824	2824	2826	2825	2833	2831	2834	2837
4	2833	2832	2834	2836	2828	2829	2826	2825	2823	2815	2822	2820	2818	2826	2826	2831	2833
5	2827	2829	2830	2829	2823	2817	2821	2820	2818	2812	2814	2810	2808	2819	2820	2827	2827
6	2818	2820	2821	2826	2820	2809	2813	2811	2811	2807	2804	2803	2803	2810	2815	2818	2818
7	2810	2812	2811	2810	2813	2802	2805	2802	2802	2794	2790	2792	2791	2801	2805	2809	2810
8	2800	2800	2799	2803	2798	2794	2790	2789	2790	2783	2777	2776	2786	2790	2795	2800	2800
9	2789	2789	2795	2791	2785	2786	2775	2780	2779	2770	2761	2766	2762	2774	2787	2790	2789
10	2778	2779	2780	2780	2773	2772	2763	2766	2763	2756	2748	2748	2750	2759	2777	2772	2778
11	2765	2769	2764	2767	2764	2755	2753	2753	2748	2739	2730	2733	2735	2745	2760	2770	2765
12	2752	2753	2747	2748	2746	2739	2737	2739	2732	2720	2712	2716	2713	2726	2744	2751	2752
13	2735	2735	2728	2732	2729	2725	2718	2720	2714	2701	2694	2698	2693	2710	2730	2733	2735
14	2719	2718	2710	2714	2711	2704	2702	2702	2698	2683	2669	2678	2675	2691	2711	2714	2719
15	2700	2701	2693	2693	2691	2683	2682	2682	2679	2664	2648	2653	2650	2668	2696	2696	2700
16	2680	2684	2676	2675	2666	2663	2663	2661	2657	2642	2625	2628	2625	2645	2673	2671	2680
17	2660	2665	2652	2654	2638	2640	2641	2638	2633	2618	2601	2605	2596	2622	2653	2651	2660
18	2637	2642	2631	2626	2620	2615	2615	2615	2608	2595	2578	2580	2572	2602	2633	2626	2637
19	2616	2618	2608	2603	2595	2591	2591	2590	2585	2570	2548	2552	2543	2577	2604	2605	2616
20	2586	2591	2583	2576	2569	2564	2570	2567	2561	2544	2522	2524	2519	2545	2577	2584	2586
21	2563	2564	2554	2550	2540	2536	2546	2543	2534	2517	2498	2496	2489	2519	2549	2551	2563
22	2537	2542	2528	2519	2513	2505	2518	2520	2506	2489	2469	2467	2458	2489	2526	2527	2537
23	2509	2511	2499	2492	2481	2477	2492	2492	2477	2459	2439	2436	2426	2463	2493	2500	2509
24	2479	2484	2467	2460	2451	2448	2463	2465	2451	2430	2406	2406	2400	2427	2463	2471	2479
25	2452	2456	2439	2429	2420	2416	2427	2438	2422	2399	2377	2369	2362	2395	2430	2442	2452
26	2422	2420	2406	2400	2389	2384	2400	2409	2389	2368	2344	2336	2331	2362	2400	2412	2422
27	2388	2393	2376	2364	2353	2353	2369	2374	2355	2337	2312	2301	2296	2330	2363	2379	2388
28	2356	2362	2344	2334	2322	2321	2335	2341	2325	2303	2280	2269	2258	2295	2334	2346	2356
29	2324	2326	2310	2300	2285	2288	2299	2308	2292	2270	2245	2235	2223	2259	2298	2314	2324



30	2291	2291	2279	2263	2249	2250	2263	2278	2256	2237	2210	2198	2185	2226	2262	2280	2291
31	2258	2255	2245	2230	2215	2216	2228	2243	2222	2201	2174	2162	2149	2190	2230	2247	2258
32	2222	2221	2205	2191	2177	2176	2197	2206	2187	2164	2136	2123	2113	2152	2192	2212	2222
33	2185	2187	2172	2156	2138	2141	2163	2167	2151	2127	2102	2086	2075	2116	2153	2174	2185
34	2146	2151	2138	2117	2103	2101	2128	2128	2113	2090	2065	2050	2038	2079	2116	2135	2146
35	2107	2111	2097	2077	2063	2063	2090	2092	2077	2053	2025	2011	1995	2039	2077	2099	2107
36	2070	2074	2060	2039	2024	2023	2051	2053	2037	2015	1988	1974	1959	2002	2039	2064	2070
37	2033	2033	2021	2001	1985	1985	2012	2014	1997	1977	1950	1934	1920	1960	2002	2025	2033
38	1995	1996	1982	1960	1944	1948	1972	1974	1957	1937	1911	1895	1883	1921	1961	1985	1995
39	1956	1957	1940	1921	1905	1909	1931	1936	1915	1897	1871	1855	1845	1882	1921	1946	1956
40	1919	1919	1900	1881	1865	1867	1890	1894	1875	1857	1831	1817	1805	1842	1879	1906	1919
41	1880	1877	1860	1841	1825	1827	1849	1853	1835	1818	1792	1777	1767	1802	1839	1867	1880
42	1837	1838	1816	1802	1782	1785	1808	1812	1795	1779	1751	1734	1725	1761	1798	1825	1837
43	1796	1797	1776	1759	1740	1744	1767	1771	1754	1740	1709	1695	1685	1720	1756	1782	1796
44	1756	1756	1735	1717	1698	1705	1724	1730	1714	1698	1669	1653	1643	1680	1716	1743	1756
45	1715	1715	1692	1675	1657	1663	1683	1690	1672	1658	1628	1612	1602	1638	1673	1701	1715
46	1674	1673	1650	1633	1617	1620	1643	1648	1631	1619	1585	1571	1562	1597	1631	1661	1674
47	1631	1632	1608	1592	1574	1578	1600	1606	1589	1579	1543	1529	1521	1553	1589	1619	1631
48	1588	1591	1564	1551	1532	1538	1558	1564	1548	1537	1502	1489	1480	1512	1545	1577	1588
49	1547	1548	1523	1507	1489	1499	1514	1520	1507	1493	1459	1449	1439	1472	1505	1535	1547
50	1504	1504	1480	1465	1449	1458	1473	1480	1467	1450	1417	1407	1399	1430	1463	1495	1504
51	1462	1463	1437	1423	1407	1416	1432	1437	1425	1409	1375	1366	1358	1389	1420	1452	1462
52	1423	1419	1393	1380	1366	1375	1389	1396	1383	1367	1334	1324	1318	1347	1378	1410	1423
53	1379	1377	1353	1335	1325	1331	1345	1352	1340	1326	1293	1283	1278	1304	1335	1367	1379
54	1334	1335	1308	1295	1282	1288	1301	1310	1297	1282	1251	1241	1240	1263	1294	1326	1334
55	1292	1289	1266	1253	1241	1248	1260	1268	1255	1241	1210	1200	1200	1223	1251	1285	1292
56	1252	1247	1224	1212	1200	1205	1214	1224	1213	1199	1171	1159	1159	1183	1208	1243	1252
57	1209	1205	1183	1169	1158	1163	1174	1181	1171	1157	1131	1120	1119	1143	1166	1199	1209
58	1166	1162	1139	1128	1118	1120	1129	1142	1128	1114	1090	1079	1079	1102	1123	1157	1166
59	1123	1118	1097	1085	1076	1079	1087	1097	1085	1073	1046	1039	1038	1061	1084	1114	1123
60	1080	1074	1056	1043	1035	1039	1045	1057	1045	1030	1006	999	998	1019	1041	1072	1080
61	1036	1030	1014	1002	994	996	1003	1014	1002	987	965	959	958	977	1000	1027	1036



62	991	987	973	961	953	954	961	971	960	944	923	917	918	935	957	987	991
63	949	944	931	921	913	912	918	927	917	902	883	877	878	893	914	944	949
64	907	900	889	880	872	871	876	885	874	859	844	837	838	851	873	902	907
65	865	859	847	839	831	831	834	842	830	817	802	796	798	810	832	858	865
66	821	816	806	797	790	790	790	799	786	777	762	755	757	769	789	814	821
67	778	772	765	754	749	749	749	757	745	735	723	716	717	730	747	772	778
68	735	730	725	713	709	709	707	715	705	694	683	676	676	689	705	729	735
69	692	688	681	672	669	669	666	672	661	652	643	636	637	649	664	686	692
70	650	646	641	631	630	629	623	632	618	609	604	597	597	608	624	643	650
71	607	604	600	591	591	589	582	588	576	568	563	557	557	568	583	601	607
72	565	562	559	551	550	550	542	545	535	527	522	519	518	529	542	558	565
73	522	520	518	511	511	510	502	503	493	487	483	481	479	489	500	515	522
74	480	477	477	471	472	471	463	462	453	448	443	445	440	450	460	473	480
75	439	436	437	431	433	431	423	422	413	407	404	405	401	411	420	431	439
76	397	397	397	392	394	392	384	382	374	368	365	367	362	373	381	391	397
77	356	357	357	353	358	355	346	343	335	329	329	330	325	335	342	351	356
78	317	317	318	316	320	317	309	303	296	292	292	292	288	298	304	311	317
79	277	279	281	281	284	280	272	267	259	256	256	257	253	264	268	272	277
80	240	242	244	247	249	245	236	230	222	220	221	224	219	230	233	235	240
81	203	207	208	212	215	210	202	195	187	186	187	192	187	196	198	200	203
82	169	171	176	180	182	177	169	160	152	152	155	161	158	165	166	166	169
83	136	140	145	149	152	146	138	128	121	121	127	131	129	135	135	134	136
84	106	110	115	120	122	117	108	98	91	92	98	104	103	107	106	104	106
85	78	81	88	93	95	90	81	71	64	66	72	79	80	82	80	77	78
86	54	58	65	70	73	67	59	49	43	46	52	59	59	61	58	54	54
87	33	36	44	50	53	48	39	30	24	27	34	40	40	41	38	33	33
88	15	18	26	31	35	30	22	14	9	12	18	25	26	25	21	16	15
89	4	7	13	18	20	15	8	2	0	2	6	12	14	14	10	5	4
90	0	0	0	0	0	0	0	0	0	0	0	0	0	0	0	0	0
91	0	0	0	0	0	0	0	0	0	0	0	0	0	0	0	0	0
92	0	0	0	0	0	0	0	0	0	0	0	0	0	0	0	0	0
93	0	0	0	0	0	0	0	0	0	0	0	0	0	0	0	0	0



94	0	0	0	0	0	0	0	0	0	0	0	0	0	0	0	0	0
95	0	0	0	0	0	0	0	0	0	0	0	0	0	0	0	0	0
96	0	0	0	0	0	0	0	0	0	0	0	0	0	0	0	0	0
97	0	0	0	0	0	0	0	0	0	0	0	0	0	0	0	0	0
98	0	0	0	0	0	0	0	0	0	0	0	0	0	0	0	0	0
99	0	0	0	0	0	0	0	0	0	0	0	0	0	0	0	0	0
100	0	0	0	0	0	0	0	0	0	0	0	0	0	0	0	0	0
101	0	0	0	0	0	0	0	0	1	0	0	0	0	0	0	0	0
102	0	0	0	0	0	0	0	0	1	0	0	0	0	0	0	0	0
103	0	0	0	0	0	0	0	0	1	0	0	0	0	0	0	0	0
104	0	0	0	0	0	0	0	0	2	0	0	0	0	0	0	0	0
105	0	0	0	0	0	0	0	0	2	0	0	0	0	0	0	0	0
106	0	0	0	0	0	0	0	0	2	0	0	0	0	0	0	0	0
107	0	0	0	0	0	0	0	0	2	0	0	0	0	0	0	0	0
108	0	0	0	0	0	0	0	0	2	0	0	0	0	0	0	0	0
109	0	0	0	0	0	0	0	0	2	0	0	0	0	0	0	0	0
110	0	0	0	0	0	0	0	0	2	0	0	0	0	0	0	0	0
111	0	0	0	0	0	0	0	0	2	0	0	0	0	0	0	0	0
112	0	0	0	0	0	0	0	1	2	0	0	0	0	0	0	0	0
113	0	0	0	0	0	0	0	1	2	0	0	0	0	0	0	0	0
114	0	0	0	0	0	0	0	1	2	0	0	0	0	0	0	0	0
115	0	0	0	0	0	0	0	1	2	0	0	0	0	0	0	0	0
116	0	0	0	0	0	0	0	1	2	0	0	0	0	0	0	0	0
117	0	0	0	0	0	0	0	1	2	0	0	0	0	0	0	0	0
118	0	0	0	0	0	0	0	1	2	0	0	0	0	0	0	0	0
119	0	0	0	0	0	0	0	1	3	0	0	0	0	0	0	0	0
120	0	0	0	0	0	0	0	1	3	0	0	0	0	0	0	0	0
121	0	0	0	0	0	0	0	1	3	0	0	0	0	0	0	0	0
122	0	0	0	0	0	0	0	1	3	0	0	0	0	0	0	1	0
123	1	1	0	0	0	0	0	1	3	0	0	0	0	0	0	1	1
124	1	1	0	0	0	0	1	1	3	0	0	0	0	0	0	2	1
125	2	1	0	0	0	0	0	1	3	1	0	0	0	0	0	3	2



126	3	2	0	0	0	0	0	2	3	1	0	0	0	0	0	3	3
127	3	2	0	0	0	0	1	2	3	1	0	0	0	0	0	3	3
128	3	2	0	0	0	0	1	2	3	2	0	0	0	0	0	3	3
129	3	3	0	0	0	0	1	3	3	2	0	0	1	0	0	4	3
130	3	3	0	0	0	0	1	3	4	3	0	0	1	0	0	3	3
131	3	3	0	0	0	0	1	3	4	3	0	0	1	0	0	3	3
132	3	3	0	0	0	0	1	4	4	3	0	0	1	0	0	4	3
133	3	3	0	0	0	0	1	4	5	4	1	0	1	0	0	4	3
134	3	3	0	0	0	0	1	4	5	4	1	0	1	0	0	4	3
135	3	3	0	0	0	1	1	4	5	5	1	0	1	0	0	4	3
136	3	3	0	0	0	1	1	4	6	5	1	0	1	0	0	4	3
137	3	3	0	0	0	1	2	4	6	5	1	1	1	0	0	4	3
138	3	3	0	0	0	1	2	4	6	5	1	1	1	0	0	4	3
139	3	3	0	0	0	1	2	4	6	5	1	1	1	0	0	4	3
140	3	3	0	0	0	1	2	4	6	5	1	1	1	0	0	4	3
141	3	3	0	0	1	1	2	4	6	5	1	1	1	0	0	4	3
142	3	3	0	0	0	1	2	4	6	5	1	1	1	0	0	4	3
143	4	3	0	0	1	1	2	4	6	5	1	1	1	0	0	4	4
144	4	3	0	0	1	1	2	4	6	5	1	1	1	0	0	4	4
145	4	3	0	0	1	2	3	4	6	5	2	1	1	0	1	4	4
146	4	3	0	0	1	2	3	4	5	5	2	1	1	0	2	5	4
147	4	4	0	0	1	2	3	4	5	5	2	2	1	0	2	5	4
148	5	4	1	0	1	2	3	4	5	5	3	2	1	0	3	5	5
149	5	4	1	0	1	2	3	4	5	5	3	2	1	0	3	5	5
150	5	4	1	0	1	2	3	4	5	5	4	2	1	0	3	5	5
151	5	4	2	0	1	2	3	4	5	5	4	2	1	0	3	5	5
152	5	4	2	0	2	2	3	4	5	5	4	2	1	0	3	5	5
153	5	4	2	0	2	2	3	4	5	5	4	2	1	0	3	5	5
154	5	4	2	0	2	2	3	4	5	5	4	2	1	0	3	5	5
155	5	4	3	0	2	2	3	4	5	5	5	2	1	0	3	5	5
156	5	4	3	1	2	2	3	4	5	5	5	2	1	1	3	5	5
157	5	4	3	1	2	2	3	4	5	5	5	2	1	1	3	5	5



158	5	4	3	1	2	2	3	4	5	5	5	2	1	1	3	5	5
159	5	4	3	1	2	2	3	4	5	5	5	3	1	1	3	5	5
160	5	4	3	2	2	2	3	4	5	6	5	3	1	1	4	5	5
161	5	4	3	2	2	2	3	4	5	6	5	3	1	1	4	5	5
162	5	4	3	2	2	2	3	4	5	6	5	3	1	1	4	5	5
163	5	4	3	2	2	2	3	4	5	6	5	3	1	1	4	5	5
164	5	4	3	2	2	2	3	4	5	6	5	3	1	2	4	5	5
165	5	4	3	2	2	2	3	4	5	7	5	3	1	2	4	5	5
166	6	4	3	3	2	2	3	4	5	7	5	3	1	2	4	5	6
167	6	5	4	3	2	3	3	4	5	7	5	3	2	2	4	6	6
168	6	6	4	3	2	3	3	5	6	7	6	4	2	2	5	6	6
169	7	6	4	3	3	3	3	5	6	8	6	5	3	2	5	6	7
170	7	6	5	3	3	3	3	5	6	8	6	5	3	3	5	6	7
171	9	6	5	3	3	3	3	5	6	8	6	6	3	3	5	7	9
172	9	6	5	3	3	3	3	5	6	9	6	6	3	3	5	7	9
173	9	6	5	3	3	3	3	6	6	9	6	6	3	3	6	7	9
174	9	6	6	3	3	3	3	6	6	9	6	6	3	3	6	7	9
175	9	6	6	3	4	3	3	6	6	9	6	6	3	3	6	7	9
176	9	6	6	3	3	3	3	6	7	9	6	6	3	3	6	7	9
177	9	6	6	3	3	3	3	6	7	9	6	6	3	3	6	7	9
178	9	6	6	3	3	3	3	6	7	9	6	6	3	3	6	7	9
179	9	6	6	3	3	3	3	6	7	9	6	6	3	3	6	7	9
180	9	9	9	9	9	9	9	9	9	9	9	9	9	9	9	9	9



2.2 Electrical, Photometric and Chromaticity Measurements

Test date	2022-07-13	Test Ambient:	25 ± 1 ° C
Test Orientation	As intended	Stabilization Time (min)	60
Model Number	LNSLOT1A68UNHD8SC196CWH (3000K)	Total Operating Time(min)	61

Electrical Measurement:

Sample No.	Voltage (Vac)	Frequency (Hz)	Current (A)	Power (W)	Power Factor	THD %
JAE220201-F1	120.0	60	0.5640	66.63	0.9844	13.86
	347.0	60	0.2064	67.78	0.9464	14.56

Chromaticity Measurement - Sphere-Spectroradiometer

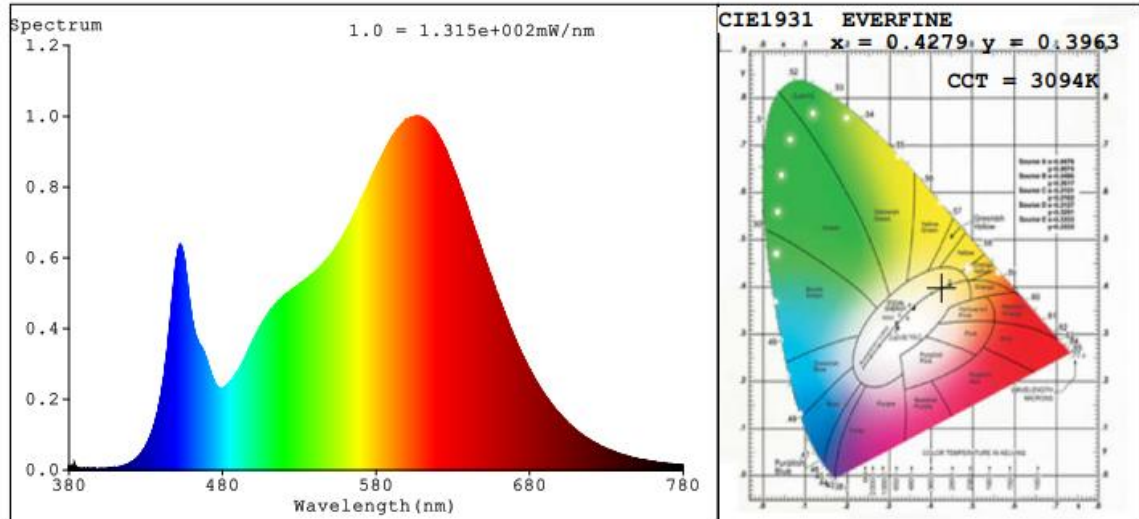
Method(Self-absorption:1.1928)(4π geometry):

Parameter	Result
Test Voltage (V)	120
Frequency (Hz)	60
CCT (K)	3094
Duv	-0.0018
Chromaticity (x, y)	x=0.4279 y=0.3963
Chromaticity (u', v')	u'=0.2481 v'=0.5169
Color Rendering Index (CRI)	86.0
R9	21
Rg	97
Rf	86
Rcs,h1	-10

Photometric Measurement –Sphere-Spectroradiometer Method:

Parameter	Result	
Test Voltage (V)	120	347
Frequency (Hz)	60	60
Total Luminous (lm)	7267	7257
Luminous Efficacy (lm/W)	109.06	107.07

Spectral Power Distribution & Chromaticity Diagram



R1 =86	R2 =94	R3 =95	R4 =85	R5 =86	R6 =93	R7 =84	
R8 =64	R9 =21	R10=87	R11=86	R12=77	R13=88	R14=98	R15=79

TM30

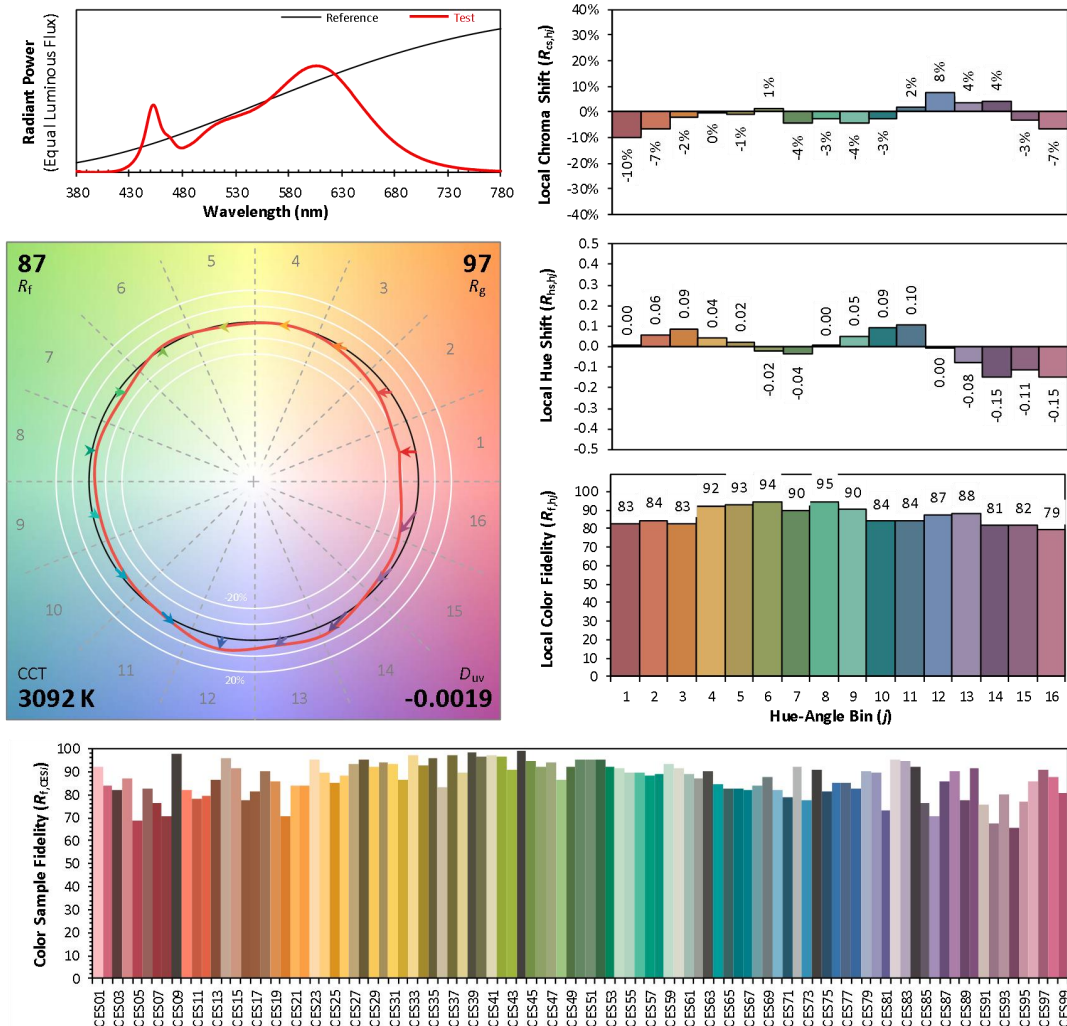
ANSI/IES TM-30-18 Color Rendition Report

Source: BXEN-XXX-11L-37A-00-0-0

Manufacturer: LEDVANCE LLC

Date: 2022-07-13

Model: LNSLOT1A68UNHD8SC196CWH(3000K)



Notes: This is a recommended method for displaying ANSI/IES TM-30-18 information.

x 0.4279
 y 0.3962
 u' 0.2481
 v' 0.5169

CIE 13.3-1995
(CRI)

R_a 86
 R_g 21

Colors are for visual orientation purposes only. Created with the ANSI/IES TM-30-18 Calculator Version 2.0



2.3 Electrical, Photometric and Chromaticity Measurements

Test date	2022-07-13	Test Ambient:	25 ± 1 ° C
Test Orientation	As intended	Stabilization Time (min)	60
Model Number	LNSLOT1A68UNHD8SC196CWH (3500K)	Total Operating Time(min)	61

Electrical Measurement:

Sample No.	Voltage (Vac)	Frequency (Hz)	Current (A)	Power (W)	Power Factor	THD %
JAE220201-F1	120.0	60	0.5449	64.26	0.9828	13.98
	347.0	60	0.1994	65.37	0.9448	14.68

Chromaticity Measurement - Sphere-Spectroradiometer

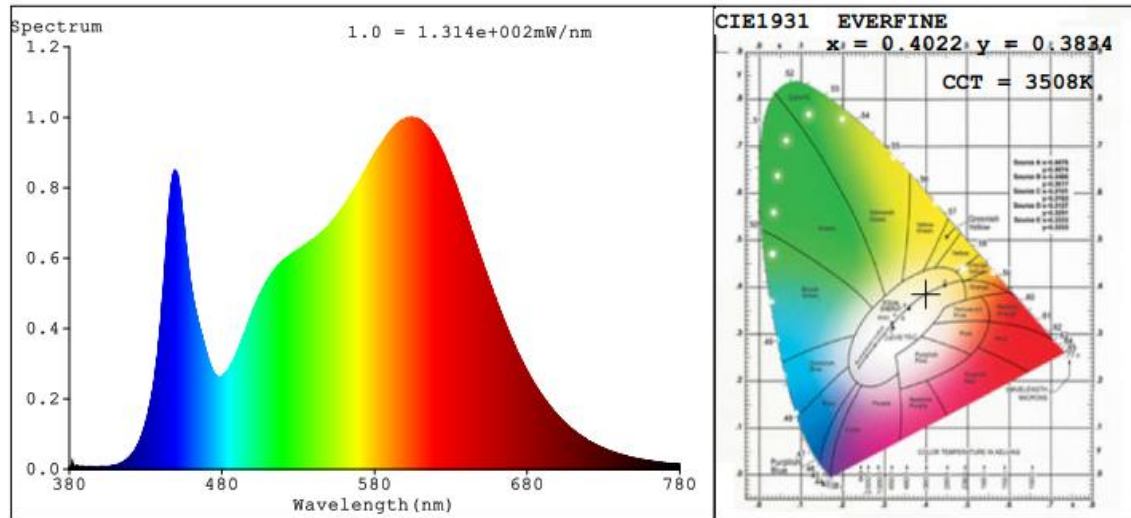
Method(Self-absorption:1.1929)(4π geometry):

Parameter	Result
Test Voltage (V)	120.0
Frequency (Hz)	60
CCT (K)	3508
Duv	-0.0026
Chromaticity (x, y)	x=0.4022 y=0.3834
Chromaticity (u', v')	u'=0.2367 v'=0.5077
Color Rendering Index (CRI)	87.4
R9	27
Rg	98
Rf	87
Rcs,h1	-9

Photometric Measurement – Sphere-Spectroradiometer Method:

Parameter	Result	
Test Voltage (V)	120	347
Frequency (Hz)	60	60
Total Luminous (lm)	7871	7864
Luminous Efficacy (lm/W)	122.49	120.30

Spectral Power Distribution & Chromaticity Diagram



R1 =87	R2 =93	R3 =97	R4 =87	R5 =87	R6 =91	R7 =87	
R8 =69	R9 =27	R10=85	R11=88	R12=75	R13=89	R14=99	R15=81



TM30

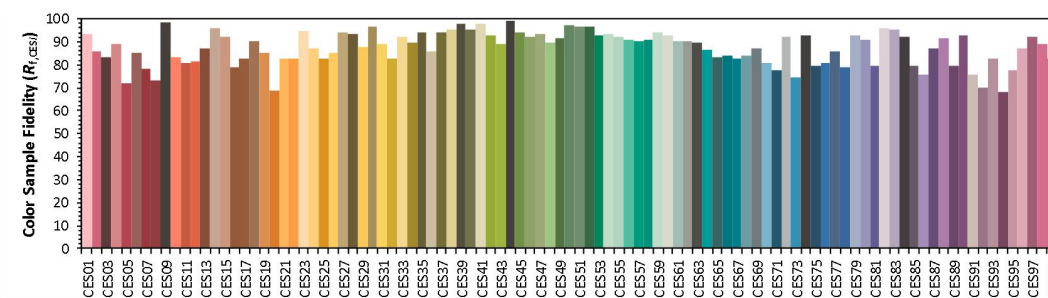
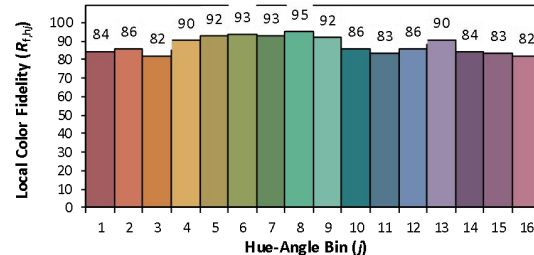
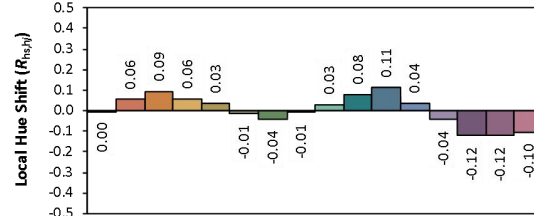
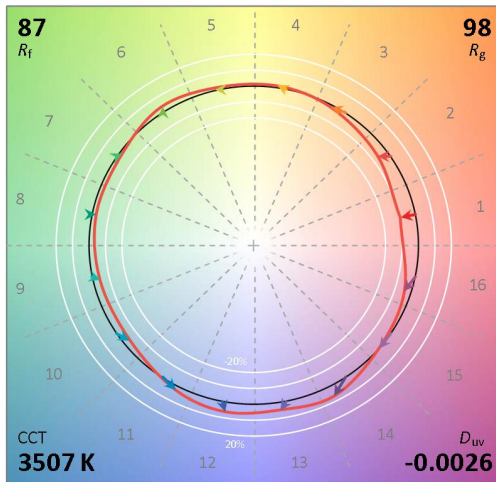
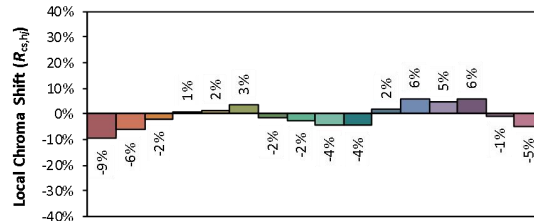
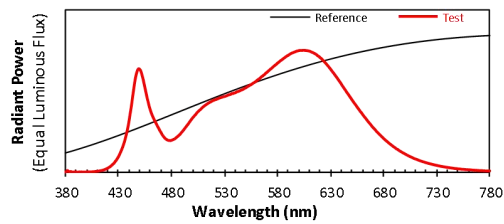
ANSI/IES TM-30-18 Color Rendition Report

Source: BXEN-XXX-11L-37A-00-0-0

Manufacturer: LEDVANCE LLC

Date: 2022-07-13

Model: LNSLOT1A68UNHD8SC196CWH(3500K)



Notes: This is a recommended method for displaying ANSI/IES TM-30-18 information.

x 0.4022

y 0.3833

u' 0.2368

v' 0.5077

CIE 13.3-1995
(CRI)

R_a 87

R_g 27

lors are for visual orientation purposes only. Created with the ANSI/IES TM-30-18 Calculator Version 2.0



2.4 Electrical, Photometric and Chromaticity Measurements

Test date	2022-07-13	Test Ambient:	25 ± 1 ° C
Test Orientation	As intended	Stabilization Time (min)	60
Model Number	LNSLOT1A68UNHD8SC196CWH (4000K)	Total Operating Time(min)	61

Electrical Measurement:

Sample No.	Voltage (Vac)	Frequency (Hz)	Current (A)	Power (W)	Power Factor	THD %
JAE220201-F1	120.0	60	0.5649	66.68	0.9837	13.90
	347.0	60	0.2067	67.83	0.9458	14.60

Chromaticity Measurement - Sphere-Spectroradiometer

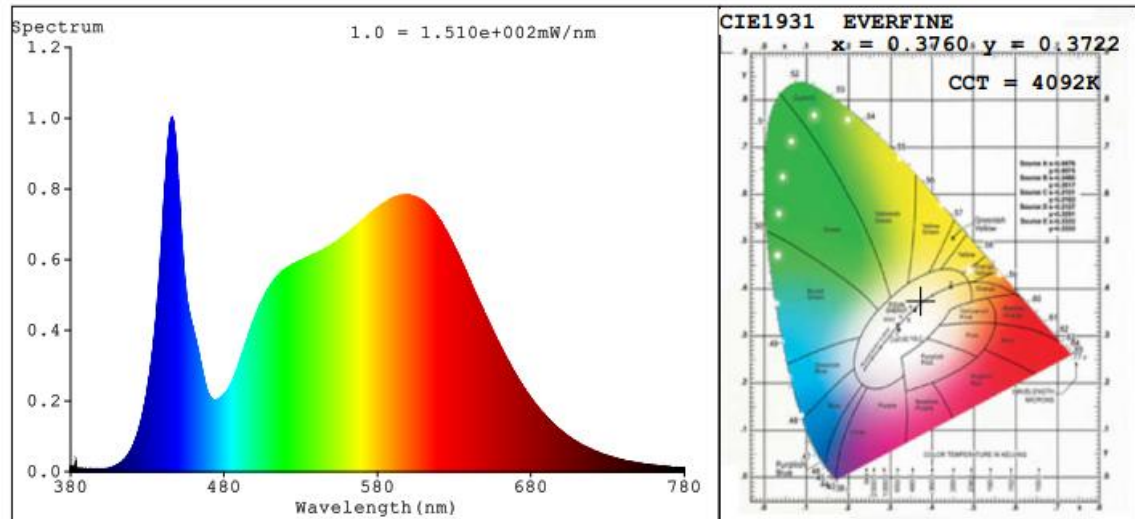
Method(Self-absorption:1.1312)(4π geometry):

Parameter	Result
Test Voltage (V)	120.0
Frequency (Hz)	60
CCT (K)	4092
Duv	-0.0008
Chromaticity (x, y)	x=0.3760 y=0.3722
Chromaticity (u', v')	u'=0.2240 v'=0.4989
Color Rendering Index (CRI)	85.8
R9	25
Rg	99
Rf	86
Rcs,h1	-10

Photometric Measurement – Sphere-Spectroradiometer Method:

Parameter	Result	
Test Voltage (V)	120	347
Frequency (Hz)	60	60
Total Luminous (lm)	7834	7827
Luminous Efficacy (lm/W)	117.49	115.39

Spectral Power Distribution & Chromaticity Diagram



R1 =85	R2 =89	R3 =93	R4 =87	R5 =86	R6 =86	R7 =88	
R8 =72	R9 =25	R10=75	R11=88	R12=71	R13=86	R14=96	R15=80



TM30

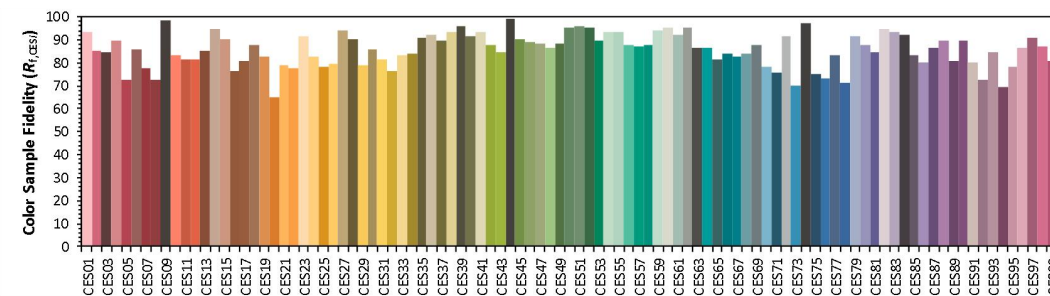
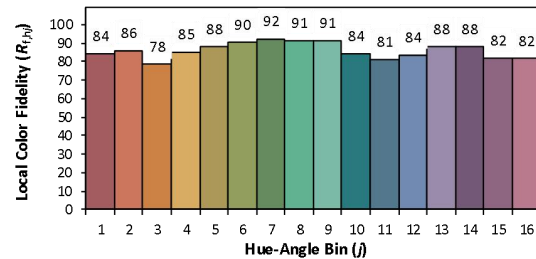
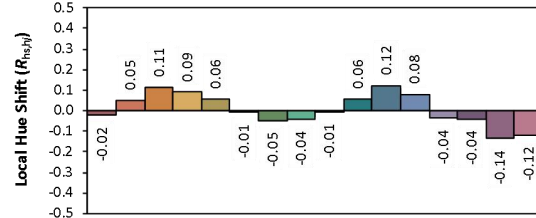
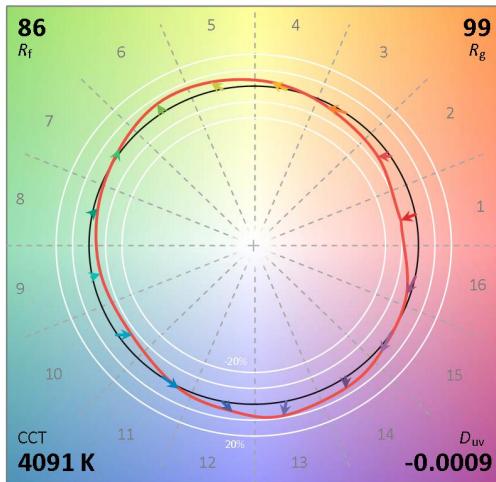
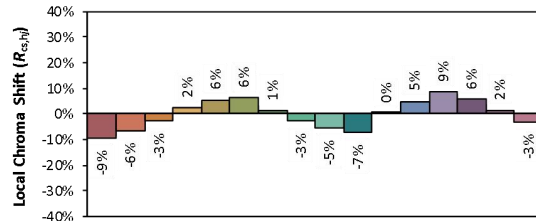
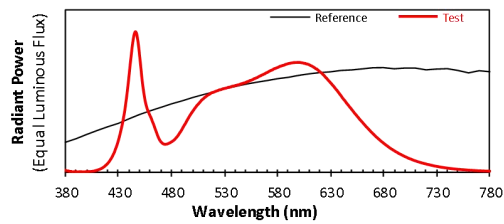
ANSI/IES TM-30-18 Color Rendition Report

Source: BXEN-XXX-11L-37A-00-0-0

Manufacturer: LEDVANCE LLC

Date: 2022-07-13

Model: LNSLOT1A68UNHD8SC196CWH(4000K)



Notes: This is a recommended method for displaying ANSI/IES TM-30-18 information.

x 0.3759
 y 0.3720
 u' 0.2240
 v' 0.4988




CIE 13.3-1995
(CRI)

R_a 86
 R_g 25

lors are for visual orientation purposes only. Created with the ANSI/IES TM-30-18 Calculator Version 2.0

2.5 Liner product comparison for 1.2m and 2.4m

Model	LNSLOT1A34UNHD8SC148CWH (3000K)	LNSLOT1A68UNHD8SC196CWH H(3000K)
Rated power(W)	34W	68W
Size(m)	1.20	2.40
LED Spacing (mm)	2.86	2.86
LED QTY	432	864
Driver Model Number	BQE46C-0850-40-PV	BQE46C-0850-40-PV*2
Calculation Method	Please refer to below "Calculation method"	
LED Working Current (mA)	19.3	19.4

Remark	LNSLOT1A34UNHD8SC148CWH(3000K)	LNSLOT1A68UNHD8SC196CWH(3000K)
Cross Section		
Overall Appearance		
Without lens& lens		
The LED quantity, wattage and the length of LNSLOT1A34UNHD8SC148CWH(3000K) are half of LNSLOT1A68UNHD8SC196CWH(3000K).		



Calculation method				
Model number	LNSLOT1A34UNHD8SC148 CWH(3000K)		LNSLOT1A68UNHD8SC196 CWH(3000K)	
Test Voltage (V)	120	347	120	347
Frequency (Hz)	60	60	60	60
Total Luminous of integrating sphere (lm)	3621	3616	7267	7257
Total Luminous of goniophotometer (lm)	3585.9	3582.6	7207.7**	7201.0**
Scale factor= 2.4m integrating sphere (lm)/ 1.2m integrating sphere (lm)	2.01	2.01	--	--

Note: The data of LNSLOT1A34UNHD8SC148CWH(3000K) is from Report No.: JAE220201-D.

** This value is calculated and the calculation formula is as below:

$$7207.7 = 3585.9 \times 2.01$$

$$7201.0 = 3582.6 \times 2.01$$



3. Test Equipment

Equipment ID	Equipment Name	Last Calibration Date	Next Calibration Date
ST-R-702	2 meter Integrating Sphere	Verified by D204 standard lamp	
ST-R-701	Spectral analysis system HAAS-1200	Verified by D204 standard lamp	
ST-R-703	Standard Lamp D204	2022-01-14	2023-01-13
ST-R-704	Power Meter for Integrating Sphere	2022-01-03	2023-01-02
ST-R-707	Temperature Probe for Integrating Sphere	2022-01-03	2023-01-02
ST-R-714	Goniophotometer system	Verified by D908S standard lamp	
ST-R-710	Standard Lamp D908S	2022-01-14	2023-01-13
ST-R-711	Power Meter for Goniophotometer	2022-01-03	2023-01-02
ST-R-709	Hygrothermograph for Goniophotometer	2022-01-03	2023-01-02
Uncertainty(K=2): Photometric Measurement (Sphere):3.40% Chromaticity Measurement(Sphere):44.8K Photometric Measurement(Goniophotometer):3.64%			

4. Product Photo



***** END OF REPORT *****